



**Li-Lee Chew (PhD)**

**Assistant Professor**

**[chewll@ucsiuniversity.edu.my](mailto:chewll@ucsiuniversity.edu.my)**

**Field of research :**

**Ecology & diversity (mangroves, fish and invertebrates)**

**Foodweb dynamics**

**Environmental monitoring (changing environment)**

**Aquaculture**

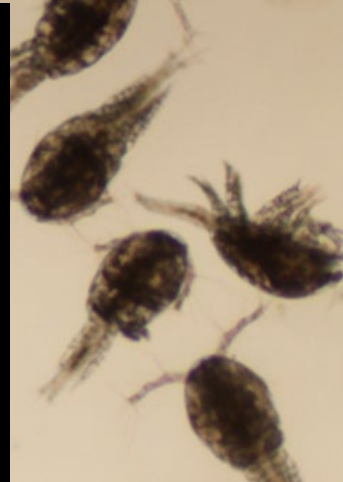


Photo courtesy of Chew LL